

Total Solution Consulting
& Quality Inspection
Service Provider

The Best Performing Success Maker **Bizpeer**

Bizpeer Co., Ltd.

Vision I&C Co., Ltd.

UIT Co., Ltd.

Greetings

Bizpeer is always with you, as a No.1 Solution Provider

Since 1994, Bizpeer has been providing professional technology consulting & inspection services.

We are providing System Engineering Service and Product & System Safety Certification Service for Railroad construction and National Defense products. We also provide Process Improvement & Quality Consulting Service to ICT industries.

Inspection Service on Shipbuilding & Offshore Plant and Aviation Industries together with industrial machinery, steel structure, transportation machineries and power and petrochemical plant is the main inspection services provided by Bizpeer.

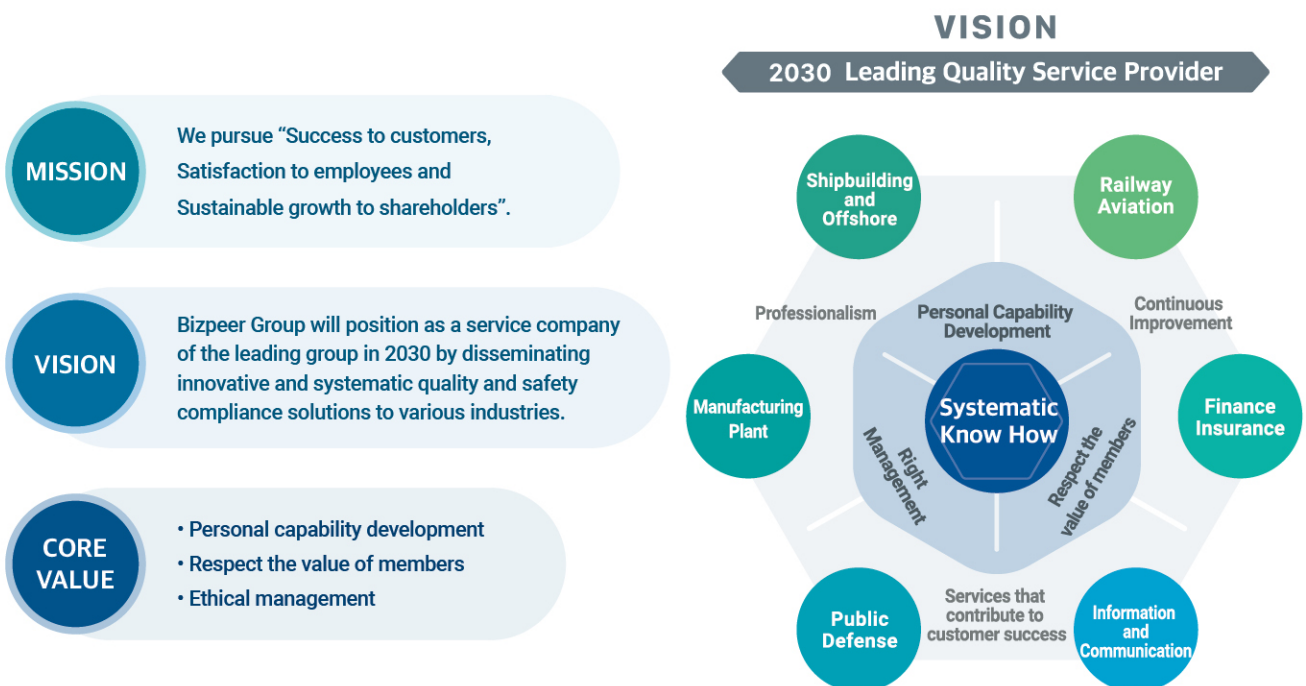
Based on our accumulated experiences, technologies and customers' trust, we have been expanding our business areas to global markets. And we are always doing our best to become a company that prepares for a better tomorrow and contributes to the country and the community.

We would like to challenge the 100 years sustaining company growing with customer through continuous innovation by listening to customer's voices and providing the best solution suitable for customer needs and bearing in mind to support success of customer with the attitude "Customers are the Top Priority".

Dear customers, please leave your tomorrow to us.

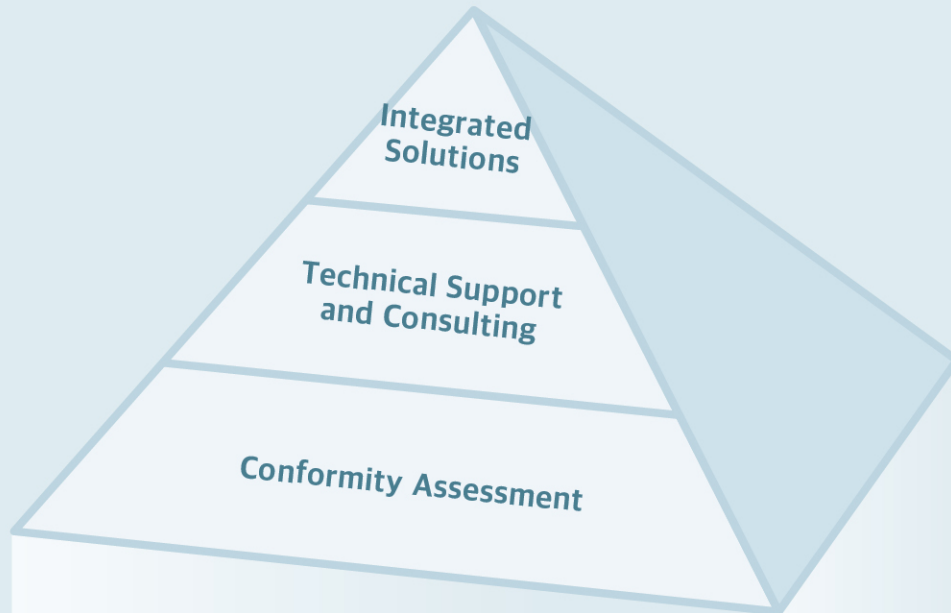
Thanks.

Vision & Mission



Bizpeer Main Service

Bizpeer's main service aims to effectively support the success of customers by applying and disseminating innovative, systematic solutions related to quality and safety compliance to various industries.



Consulting & Technical Support

- Feasibility Study of Railway Construction
- System Engineering (SE)
- Functional Safety (SIL Certification, SIL Review)
- RAMS / RCM
- CBM / PHM
- AI / Big Data
- Process Improvement (ISO, CMMI, IRIS, TL 9000, etc.)

Inspection of Offshore & Onshore

- Visit Inspection Service
- Short-Term Inspection Service
- Long-Term Inspection Service

3rd Party Inspection

- Third Party Qualification Inspection
- Guarantee of Quality Inspection Results

Coordination

Information System Audit

- EA / ISP / BPR Audit
- Development / Operation / DB Build Audit
- ITS Build Audit

Solution Development and Supply

Training

Shipbuilding & Offshore

Railway

Aviation

Automotive

Public

National Defense

Finance

Insurance

Construction

Plant

Electric Power

Electric Electronics

Information and Communication

Information Technology(IT)

Other Manufacturing

Quality Inspection

The Inspection business aim to create the value that our customers need, being entrusted quality inspection contract from customers in all areas of the industry, as satisfying the quality required by the customer with our best not only for safety, process, but also for delivery.

Service Area

Shipbuilding / Offshore Plant

- ▶ Container Ship / Crude Oil Tanker
- ▶ FPSO / Platform
- ▶ Gas Carrier
- ▶ Drill ship

Petrochemical / Power Generating Plant - Including Aux. Equipment

- ▶ Petroleum, LNG
- ▶ Petrochemical
- ▶ Power Generation Facilities
- ▶ Co-Generation Plant
- ▶ Environment Power Plant
- ▶ HRSG

Aviation Industry

- ▶ B-787
- ▶ B-737, 747, 777, 767
- ▶ A-320, 330, 350
- ▶ Assembling inspection, paint inspection, and manufacturing inspection for each business division

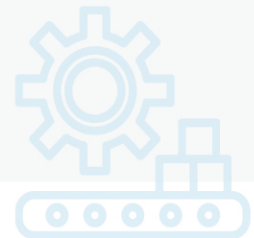
Transportation & Harbor Equipment

- ▶ Container Handling System (Container Cranes, Transfer Cranes)
- ▶ Material Handling System
- ▶ Cargo Handling Cranes
- ▶ Stackers and Re-claimer
- ▶ Ship-loader and Un-loader
- ▶ Belt Conveyor System

Iron & Steel Plant / Steel Bridge & Steel Structures

Precision Machining Product

- ▶ Semi-conductor Equipment
- ▶ Air Craft Parts
- ▶ Diesel Engine



Service Provided

Quality Control Service

- ▶ Design Quality Control
- ▶ Raw Material Quality Control
- ▶ Production Quality Control
- ▶ Installation and Delivery Quality Control
- ▶ Outsourcing Quality Control
- ▶ Quality Assurance Work
- ▶ Quality Inspection Work

Process Control Service

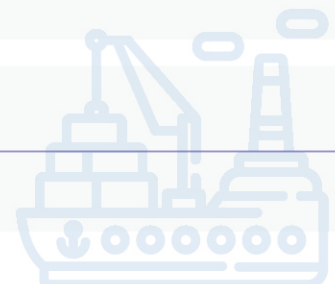
- ▶ Schedule Estimation
- ▶ Design Schedule Plan & Control
- ▶ Business Plan Establishment and Management
- ▶ Management of Progress

Safety Control Service

- ▶ Work Permit
- ▶ Traffic Safety
- ▶ Fire Monitoring
- ▶ Gas Measurement in closed area

Delivery Control Service

- ▶ Purchased Product Inspection



Consulting

We provide comprehensive solutions to customers through our accumulated experience and know-how in various industries to effectively support their success, from quality management consulting in IT and automotive fields in 1994 to system reliability & safety consulting, and development and supply of related solutions.

Service Area

Engineering Consulting

- ▶ SIL (Safety Integrity Level) Certification Support
- ▶ SE (System Engineering)
- ▶ IoT/AI based CBM (Condition based Maintenance)
- ▶ FMEA, FTA, HAZOP based System Risk Assessment
- ▶ Preliminary Feasibility Study, etc.

ICT Consulting

- ▶ CMMI based SW Process Improvement
- ▶ IT Service Management and ISO 20000
- ▶ PMO, QAO Service based on Orderer/Provider
- ▶ Organization and System Diagnosis based on International Standards

Quality / Environment / Safety Consulting

- ▶ Quality (ISO 9001, IATF 16949, TL 9000, AS 9100, IRIS (ISO TS 22163), etc.)
- ▶ Environment and Safety (ISO 14001, ISO 45001, etc.)
- ▶ ISO Management System based Process Improvement

Solution

- ▶ Project Management System
- ▶ Process Asset Management System
- ▶ Failure Reporting, Analysis, and Corrective Action System
- ▶ Other In-House Development Systems are established (Comprehensive Management System in Railway, Ultrafine Dust Measurement System in Environment, etc.)

Training

- ▶ SW Engineering Training (Requirements Engineering, Architecture/Design, Modeling, Configuration Management, Peer Review, Testing, SW Quality Assurance, etc.)
- ▶ Engineering Training (System Engineering, RAMS, Functional Safety, Automotive Core Tool, etc.)
- ▶ Standard and Model Training (CMMI, IT Service Management, ASPICE, ISO, TL 9000, IATF 16949, etc.)
- ▶ QuEST Forum Sanctioned TL 9000 Auditor Qualification Training



Solution

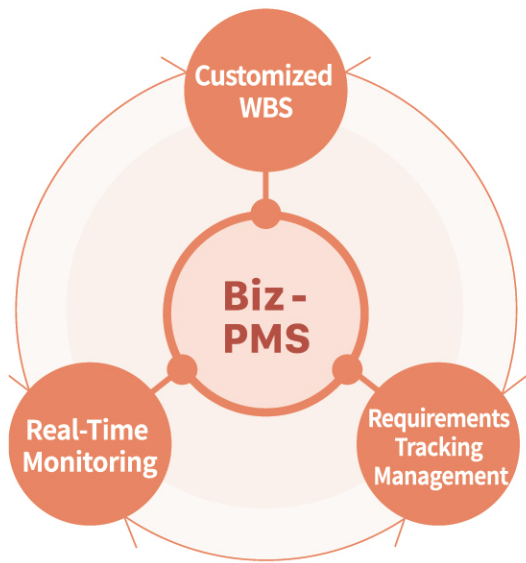
Bizpeer established an Affiliated Research Institute in 2005 and started developing an asset management tool for efficient business process management. Since then, we have been providing various solutions and services to customers, including project management system, failure reporting, analysis, and corrective action management system, and condition-based maintenance system applying AI technology.

Service Area

Biz-PMS

Project Management System for improving Work Productivity and Efficiency

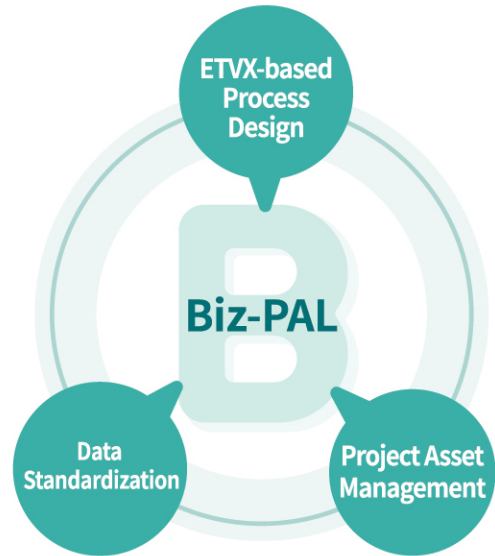
PMS Project Management System



Biz-PAL

Web based Process Asset Management System for active process improvement in the organization

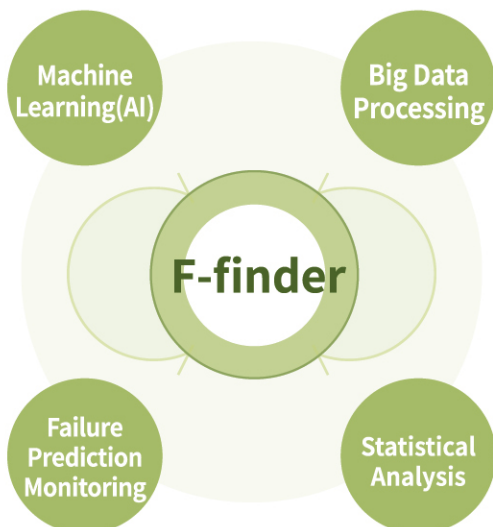
PAL Process Asset Library



F - finder

Condition-Based Maintenance System(CBM) applying AI technology

CBM Condition Based Maintenance



SCARF

Failure Reporting, Analysis, and Corrective Action System (FRACAS) with innovative work efficiency

FRACAS Failure reporting, analysis, and corrective action system



Major Client

Shipbuilding / Offshore



Railway



Automotive / Aviation



Public / National Defense



Construction / Plant / Other Manufacturing



Finance / Insurance



ICT / Electric and Electronics



Electric Power





Bizpeer Co., Ltd.

Head Office

Rm. 610 & 611 World Meridian Venture Center, 254 Beotkkot-ro,
Geumcheon-gu, Seoul, 08511, Republic of Korea

Tel (+82) 2 2113 8268 Fax (+82) 2 2113 8269

Yeongnam Branch

32 Bieum-ro 4beon-gil, Seongsan-gu, Changwon,
Gyeongsangnam-do, 51454, Republic of Korea

Tel (+82) 55 252 3560 Fax (+82) 55 252 3561

Bizpeer Family

Vision I&C Co., Ltd.

32 Bieum-ro 4beon-gil, Seongsan-gu, Changwon,
Gyeongsangnam-do, 51454, Republic of Korea

Tel (+82) 55 252 3560

UIT Co., Ltd.

Rm. 602 World Meridian Venture Center, 254 Beotkkot-ro,
Geumcheon-gu, Seoul, 08511, Republic of Korea

Tel (+82) 2 855 5900